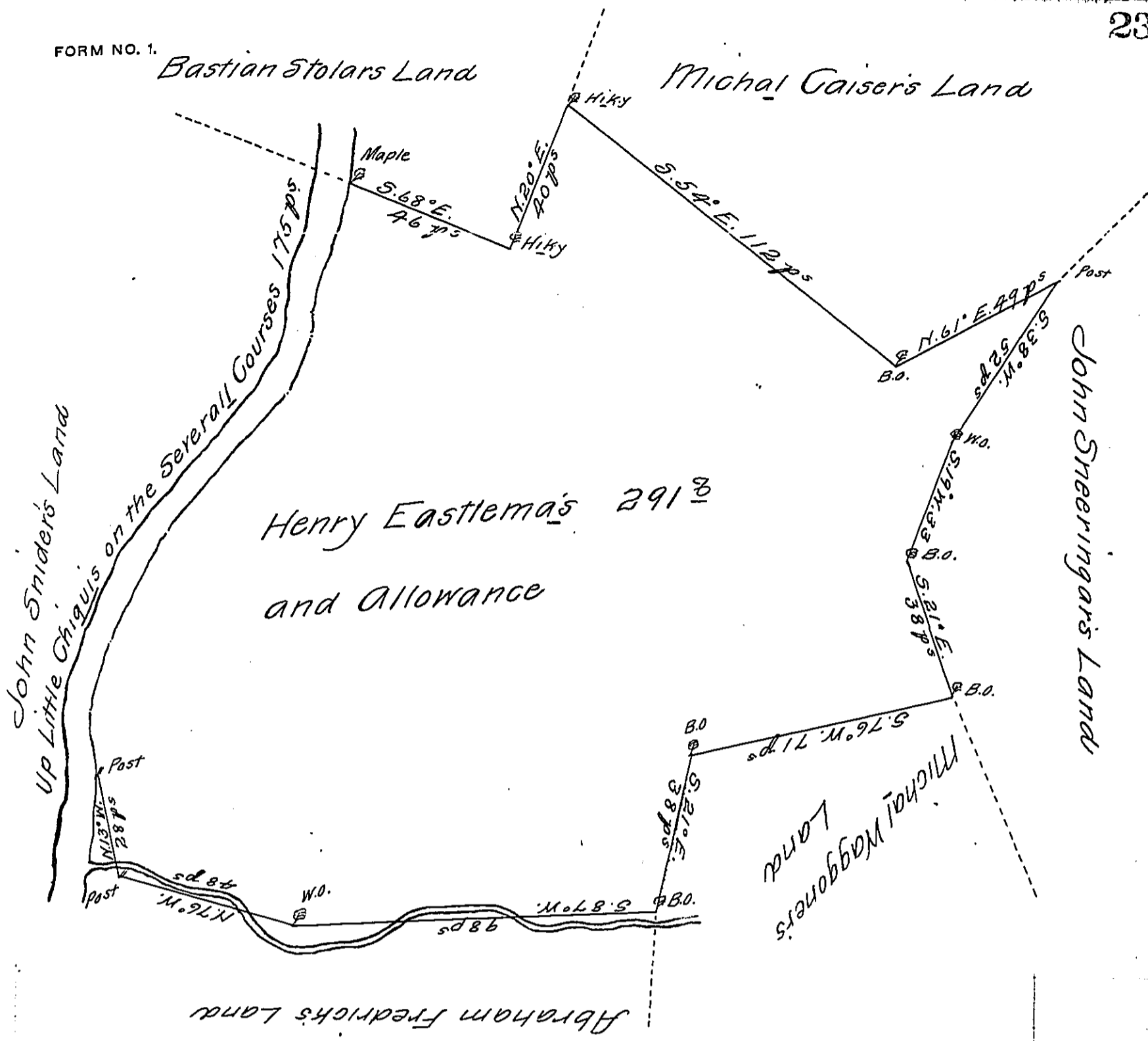


FORM NO. 1.



A Draught of Henry Eastlemans Land situate in Rapho Township - Lancaster County containing Two Hundred and Ninty one Acres and the Usual Allowance of Six pCt for Roads &c - By Virtue of the Honble the Proprietaries Warrant Dated the Sixteenth Day of February 1742

Surveyed this 23^d Day of November 1759

for me Bartrem Galbreath
for W^m Galbreath D.S.

To Nich^o Scull }
Surv^r Gen^l }

IN TESTIMONY that the above is a copy of the original remaining on file in the Department of Internal Affairs of Pennsylvania, made conformably to an Act of Assembly approved the 16th day of February, 1833, I have hereunto set my Hand and caused the Seal of said Department to be affixed at Harrisburg, this Seventh day of September 1911

Harvey Howell
Secretary of Internal Affairs.